

PRAMC – Equipment's

Laser Based Road Condition Data Collection Vehicle (RCDCV) – Using Road Measurement Data Acquisition System (ROMDAS)

- ❑ The System collects **high accuracy** and reliable data for highways
- ❑ Equipped with Distance Measuring Instrument (**DMI**), **Laser Profilers** (for IRI, Texture), **LRMS** (Laser Rut Measurement System), **GPS** receiver, **Video Cameras** (Right of Way) and Pavement Camera
- ❑ A wide variety of pavement characteristics such as **Rutting, Macro-Texture, Videos, Semi Automatic Condition rating, DGPS** are collected
- ❑ Laser Rut Measurement **gives Immediate and Precise** transverse profile.
- ❑ Used for the detection and characterization of pavement rutting conditions
- ❑ Efficiency to **capture full 4m width profiles** at high speeds

PRAMC – Equipment's

Laser Based Road Condition Data Collection Vehicle (RCDCV) – Using Road Measurement Data Acquisition System (ROMDAS)

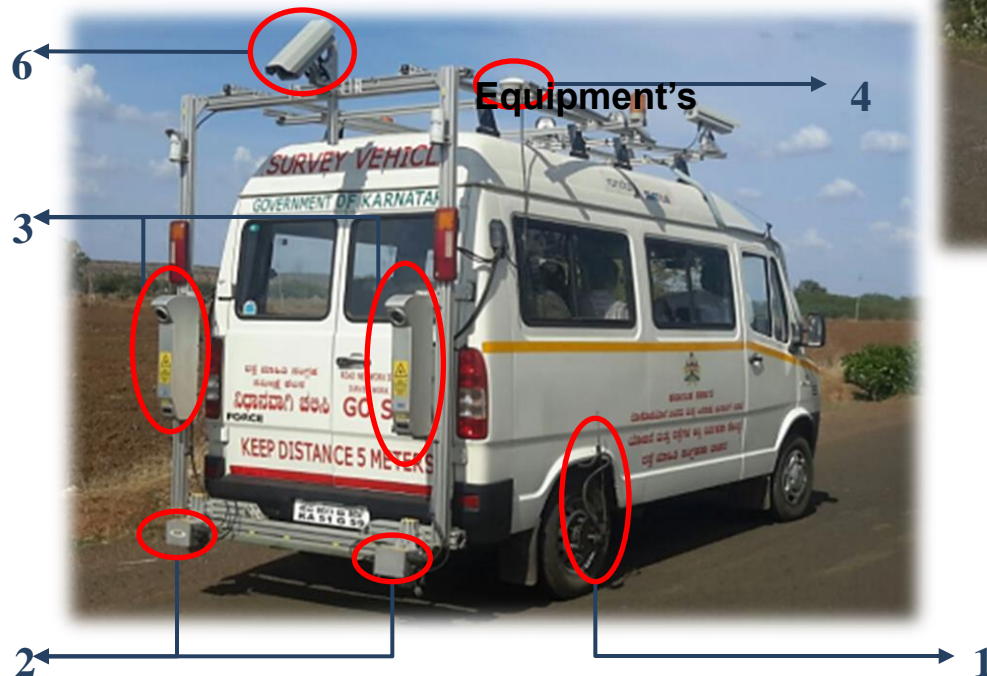
ROMDAS system is configured with various equipment's for collecting inventory and condition data. The equipment's/ accessories installed on the ROMDAS survey vehicle are as mentioned below

- ☐ ROMDAS Hardware Interface;
- ☐ Power Distribution box;
- ☐ Odometer sensor to measure the distance;
- ☐ Laser Profilometers to measure roughness;
- ☐ Laser Rut Measurement System (LRMS) to measure rut depth;
- ☐ GPS receiver for capturing spatial data;
- ☐ Video Cameras for Right of Way (RoW) and Pavement;
- ☐ 58 key configurable ROMDAS keyboard for inventory and visual condition
- ☐ Computer monitor;
- ☐ Other cable connections.

PRAMC – Equipment's

Road Measurement Data Acquisition System

1. Distance Measuring Instrument (DMI)
2. Laser Profilers (IRI, Texture)
3. LRMS (Laser Rut Measurement System)

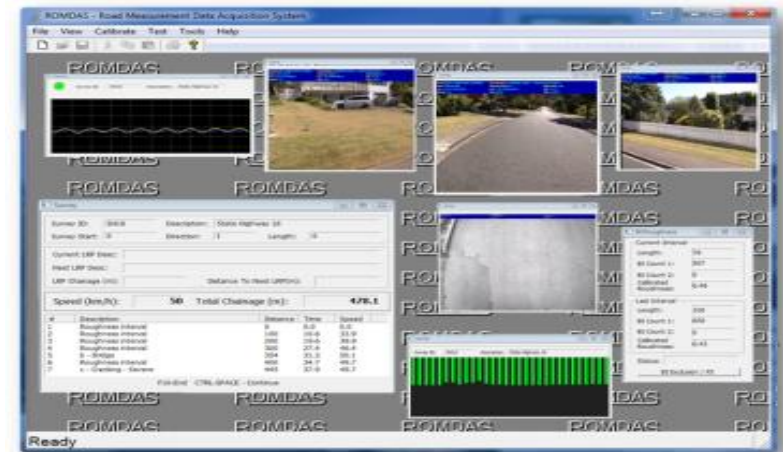


4. GPS receiver
5. Video Cameras (Right of Way)
6. Pavement Camera

PRAMC – Equipment's

Road Measurement Data Acquisition System

- ❑ RCDCV is used for determining
 - GPS Centreline and Geometry
 - Location Referencing Points
 - International Roughness Index (IRI)
 - Profile and Pavement Video with GPS coordinates
 - Rut Depths, edge break and cracking
 - Details of Inventory
 - Assets within the Right Of Way



PRAMC – Equipment's

Road Measurement Data Acquisition System

□ Data Application

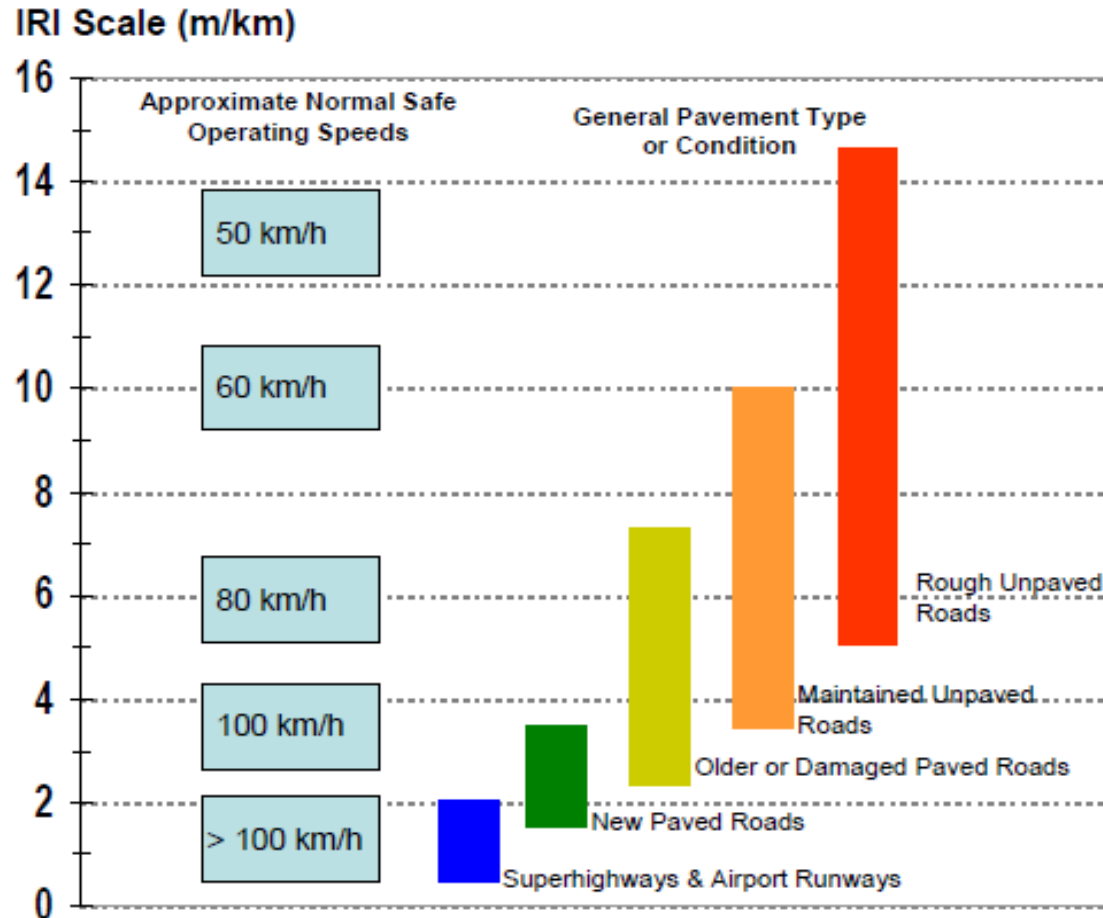
- will be used for the **designs of overlays, reconstruction and Rehabilitations** of Roads
- Pavement Management System
- Routine Maintenance Management System
- **Annual budgeting** for maintenance
- **HDM-4 Analysis**
- **Annual works plan**
- **Project Analysis**
- **Program Analysis**
- **Strategic Analysis**

GPS_Processed_T1109 - Microsoft Access											
Table View											
File Home Create External Data Database Tools Fields Table											
View Fields Paste											

PRAMC – Equipment's

Road Measurement Data Acquisition System

- Standard IRI Values thresholds



Source: Sayers et al., 1986